




No.1 Jinxin Road, Fuyang, Hangzhou, China

Sales Hotline: 86-571-28037691

E-mail: info@maxforklift.com

Specifications published in this catalogue are subject to changes without notice. Standard equipment may differ from this list, please contact your local dealer for information.

© 2024 Maximal, all rights reserved. MAXIMAL and  are trademarks of Hyster-Yale Maximal Forklift (Zhejiang) Co., Ltd..



Scan to know more



M SERIES ROUGH TERRAIN FORKLIFT

FD18T/FD25T/FD35T

Load Capacity 1,800KG/2,500KG/3,500KG





Maximal Rough Terrain Forklift Introduction



2WD

Strong flexibility
in rough terrain

100% differential lock.

Oil-immersed Braking and
Auto parking greatly extended
service life improve working
efficiency.

4WD

Superior performance
in extreme conditions





Maximal Rough Terrain Forklift Introduction

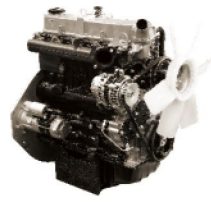
Engine

World renowned brands engine for superior performance.

MITSUBISHI S4S

Rated output 35.3kw/2250rpm >

Rated torque 182N.m/1800rpm >



YANMAR 4TNE98

Rated output 42.1kw/2300rpm >

Rated torque 196.3N.m/1700rpm >



ISUZU 6BG1QC

Rated output 82kw/2000rpm >

Rated torque 416N.m/1400-1600rpm >



MITSUBISHI D04EG

Rated output 36kw/2250rpm >

Rated torque 177N.m/1800rpm >



KU BOTA v2403(EuV+Tier4)

Rated output 43.2kw/2600rpm >

Rated torque 198N.m/1500rpm >



KU BOTA WG3800(EuV)

Rated output 54.6kw/2400rpm >

Rated torque GAS 246.8N.m/1500rpm >



KU BOTA V2607 (EUV)

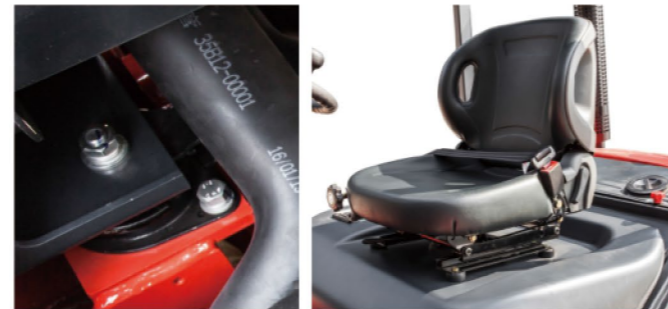
Rated output 48kw/2400rpm >

Rated torque 225N.m/1500rpm >



Floating System

A superior full floating overhead guard is installed with rubber damping instead of the traditional rigid design. This greatly reduces machine vibration and offers a smoother ride over rough terrain and reduces operator fatigue.



Fully Sealed Oil-Bath Protection Wet Brakes (4WD)

Brake components operate submerged in oil, shielding them from mud, dust, and water. This eliminates performance fade caused by contamination meanwhile extending service life.



High Quality Tyres

Industrial tyres with a wide footprint giving it greater stability and lift capacity in rough work environments.



High Ground Clearance

Offer greater maneuverability and keep the machine moving in roughest of applications.



Auto Parking Brake (4WD)

The system automatically engages the brake when the vehicle stops, preventing rollback on slopes. streamlining loading/unloading and short waiting processes to enhance overall workflow

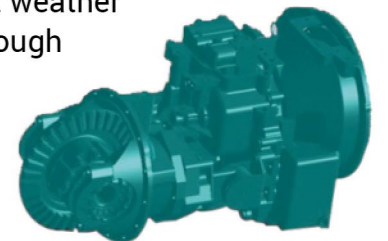
Upward Steering Cylinder (4WD)

Lay the steering cylinder upward to make the turning radius smaller and rear wheel steering angle bigger.



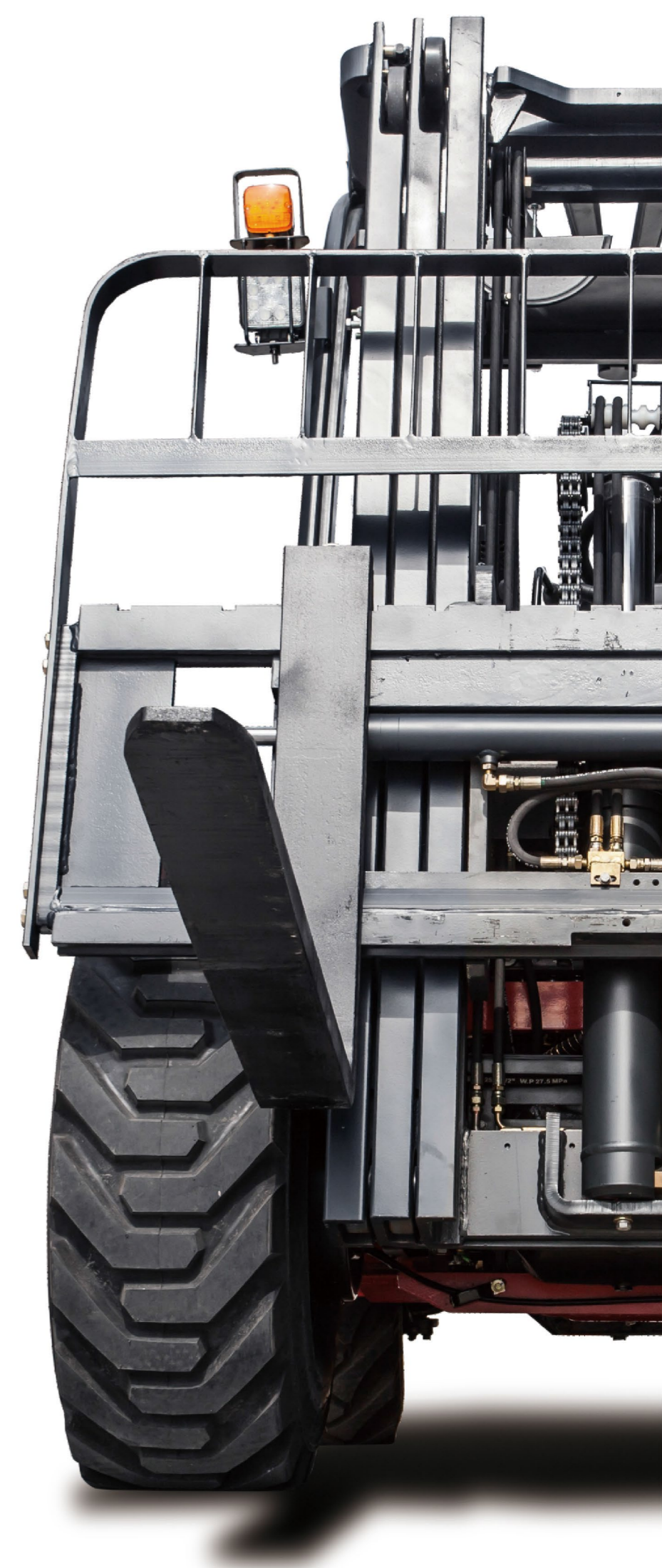
100% Differential Lock (2WD)

Power shift transmission with jaw type 100% differential lock provides ultimate traction during inclement weather conditions and rough operating surfaces.





Our Solution, Your Decision



Body

		2WD				4WD		
YES ● / NO ●		1.8T	2.5T	3.5T	5T	1.8T	2.5T	3.5T
Body	Floated Overhead Guard		●				●	
	4WD-2WD Rocker Switch		—				●	
	Industrial Tyres(F/R)	● / ●	● / ●	● / ●	● / ●	● / ●	● / ●	● / ●
	Suspension Pedal			●			●	
	Truck Width(mm)	1450	1557.5	1600	2067	1450	1450	1600
	Loaded into 20GP Container	●	●	●	●	●	●	●
	External Type Steering Cylinder			●			●	
	With Prefilter		●				●	
	LED Lights		Standard				Standard	
	Safety Start System*		Standard				Standard	
	Suspension Seat		Option				Option	
	OPS system		Option				Option	
	Wet Brake Axle&Auto-Parking			●			Option	
	Performance	Engine	YANMAR 4TNE98/MITSUBISHI S4S		YANMAR 4TNE98	ISUZU 6BG1QC	YANMAR 4TNE98 /MITSUBISHI S4S /MITSUBISHI D04EG	
Gradeability		20%	20%	16%	30%	80%/60%	50%	45%
Gradient		11.3°	11.3°	9°	16.7°	38.6°/31°	26.5°	24.2°
Min.Turning Radius(mm)		2840	2870	2870	3550	3120	3120	3120
Transmission Model		Hydraulic				Hydraulic		
Differential Lock Type		Jaw Type Differential Lock				Limited Slip Differential Lock		
Differential Ratio		100%				45%		

Safety Start System*The truck can't start if any below:1-operator leaves the seat,2-seatbelt unfastened,3-hand brake released,4-not in N positon.

Forklift Specification

2WD 1.8T/2.5T/3.5T

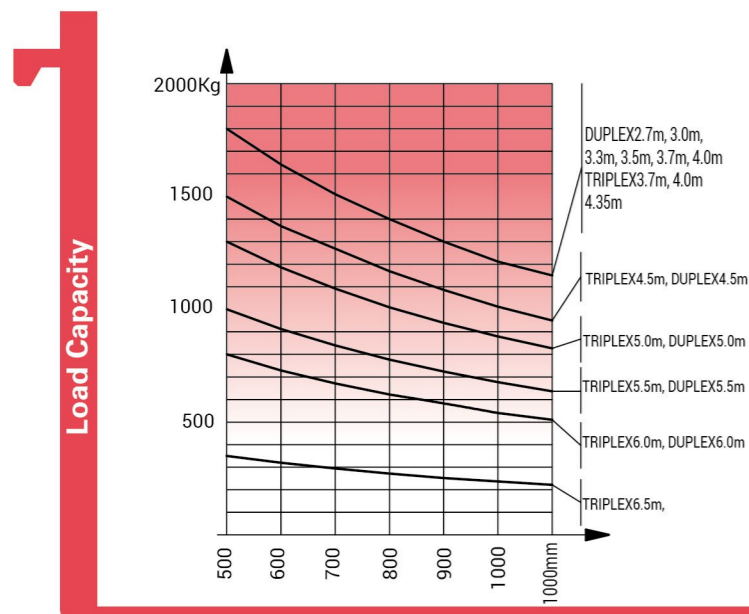
		Model	FD18T-C2WE3	FD25T-C2WE3	FD35T-C2WE3		
General	1	Model	FD18T-C2WE3	FD25T-C2WE3	FD35T-C2WE3		
	2	Power type	Diesel				
		Optional type	WV3/WE3/W(14)3				
Characteristic & Dimension	3	Rated capacity	Kg 1800	2500	3500		
	4	Load centre	mm 500	500	500		
	5	Lifting height	mm 3000	3000	3000		
	6	Free lift	mm 105	160	165		
	7	Fork size	L×W×T mm 1070×100×35	1070×122×40	1070×125×45		
	8	Fork regulating range	Min./Max. mm 200-1315	250-1160	250-1160		
	9	Mast tilt angle	F/R Deg 10/12	10/12	10/12		
	10	Front overhang	mm 509	586	601		
	11	Rear overhang	mm 520	520	520		
	12	Min. ground clearance(drive steer axle)	mm 270	270	270		
	Overall dimensions	13	Length to face of fork(without fork)	mm 2910	2946	2956	
		14	Overall width	mm 1440	1557.5	1600.5	
		15	Mast lowered height	mm 2148	2265	2330	
		16	Mast extended height (with backrest)	mm 4150	4175	4305	
		17	Overhead guard height	mm 2256.5	2256.5	2276	
	18	Turning radius	mm 2840	2870	2870		
	Min. right angle stacking aisle width	19	Pallet size a =1000, b =1200	mm 4550	4726	4741	
			Pallet size a =1200, b =800	mm 4350	4856	4871	
	Performance	20	Min. right angle stacking aisle width(pallet size a =1200, b =1200)	mm 2560	2870	2870	
Speed		21	Travel(Laden/Unladen)	Km/h 20/19	20/18	22/22(WE3)20/18(WV3)	
		22	Lifting(Laden)	mm/sec 610(WE3)/590(WV3)	570(WE3)/480(WV3)	450(WE3)/385(WV3)	
		23	Lowering(Laden)	mm/sec 450	450	450	
24	Max. Drawbar pull(Laden)	KN 15	17(WE3)/15(WV3)	17(WE3)/15(WV3)			
Tyre	25	Max. Gradeability(Laden)	% 20	20	16		
	Tyre	26	Front	12-16.5-12PR	12-16.5-12PR	14-17.5-14PR	
		27	Rear	27×10-12-12PR	27×10-12-12PR	27×10-12-12PR	
	Tread	28	Front	mm 1125	1250.5	1250.5	
		29	Rear	mm 1185	1205	1205	
Weight	30	Wheel base	mm 1880	1880	1880		
	31	Self weight	kg 3700	4465	5180		
	Weight Distribution	Laden	32	Front axle	kg 4730	5990	7725
			33	Rear axle	kg 770	975	955
		Unladen	34	Front axle	kg 1480	1785	2070
			35	Rear axle	kg 2220	2680	3110
	36	Battery	Voltage/Capacity V/Ah	1990/12/1			
Power & Transmission	Engine	37	Model	4TNE98-BQFLC	S4S-455		
		38	Manufacture	YANMAR	MITSUBISHI		
		39	Rated output/r.p.m.	Kw 42.1/2300	35.3/2300		
		40	Rated torque/r.p.m.	N.m 186-206/1700	170±8/1700		
		41	No. of cylinder	4	4		
		42	Bore×Stroke	mm 98×110	94×120		
		43	Displacement	L 3.318	3.331		
	44	Fuel tank capacity	L 55	55			
	Transmission	45	Manufacture	China			
		46	Type	YQXD30MKS	YQXD30MKS	YQXD40MKS	
		47	Stage	F/R 1/1			
48		Operating pressure	Mpa 20				

4WD 1.8T/2.5T/3.5T

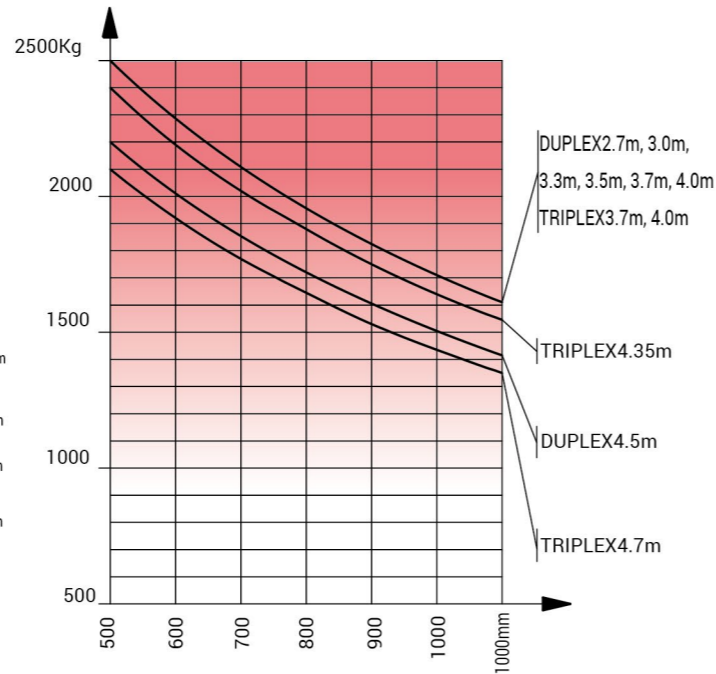
		Model	FD18T-C4WE3	FD25T-C4WE3	FD35T-C4WE3				
General	1	Model	FD18T-C4WE3	FD25T-C4WE3	FD35T-C4WE3				
	2	Power type	Diesel						
		Optional type	WV3/WE3/SWE3/W(9A)3/SW(9A)3/W(6)3/W(14A)3/SW(14A)3						
Characteristic & Dimension	3	Rated capacity	Kg 1800	2500	3500				
	4	Load centre	mm 500	500	500				
	5	Free lit height	mm 3000	3000	3000				
	6	Free lift	mm 105	160	165				
	7	Fork size	L×W×T mm 1070×100×35	1070×122×40	1220×122×45				
	8	Fork regulating rang	Min. Max. mm 200-1315	250-1310	250-1500				
	9	Mast it angle	F/R Deg 10/12	10/12	10/12				
	10	Front overhang	mm 520	586	601				
	11	Rear overhang	mm 600	600	600				
	12	Min. ground clearance(drive steering axle)	mm 219	219	219				
		Min. ground clearance(chassis)(Unladen/Laden)	mm 230/215	230/215	224/230				
		Min. ground clearance(mast)(Unladen/Laden)	mm 275/250	270/255	270/250				
		Ground clearance (drawbar pin)	mm 354.5	354.5	430				
		Height from seat surface to overhead guard inner side	mm 990	990	1043				
	Overall dimensions	13	Length to face of fork(without fork)	mm 3000	3066	3081			
		14	Overall width	mm 1450	1450	1600			
		15	Mast lowered heigh	mm 2145	2235	2330			
		16	Mast extended height(with backrest)	mm 4140	4175	4305			
		17	Overhead guard height	mm 2256	2256	2276			
	18	Turning radius	mm 3120	3120	3120				
Min. right angle stacking aisle width	19	Pallet size a ₁ =1000, b ₁ =1200	mm 4629	4706	4921				
		Pallet size a ₂ =1200, b ₂ =800	mm 4829	4906	4871				
20	Min. right angle stacking aisle width(pallet size a ₂ =1200, b ₂ =1200)	mm 2670	2670	2725					
Performance	Speed	21	Type	WV3W(6)3	WE3	WV3W(6)3	WE3	WV3(6)3	WE3
		22	Travel(Unladen/Laden)	Km/h 18/17	20/19	18/17	20/19	18/17	19/18
		23	Lifting(Unladen/Laden)	mm 630/590	640/610	620/570	650/600	480/450	510/485
	24	Lowering(Unladen/Laden)	mm 420/450	420/450	510/450	510/450	500/450	500/450	
	25	Max. Drawbar pul(Unladen/Laden)	KN 31	38	38	38	27	38	
25	Max. Gradeability(Unladen/Laden)	% 50	80	50	50	30	45		
Tyre	Braking distance		m		≤6				
	Tyre	26	Front	12-16.5-12PR		12-16.5-12PR		14-17.5L-14PR	
		27	Rear	10.0175-15.3		10.0175-15.3		10.0/75-15.3	
	Tyre pressure(Front/Rear)		MPa 0.62/0.55		0.62/0.55		0.55/0.55		
	Tread	28	Front	mm 1123	1123	1250			
29		Rear	mm 1190	1190	1190				
Ground clearance(Front tyre centre (Unladen/Laden)		mm 405.5/385		405.5/385		450.5/425			
Ground clearance (Rear tyre centre)(Unladen/Laden)		mm 370/350		370/350		370/385			
Weight	Wheelbase		mm 1880		1880		1880		
	Self weight		kg 4255		4830		5545		
	Weight Distribution	Laden	32	Front Axle	kg 4602	6597	7872		
			33	Rear Axle	kg 1453	733	1073		
Unladen	34	Front Axle	kg 1702	2173	2345				
	35	Rear Axle	kg 2553	2657	3100				
36	Battery	Voltage/Capacity V/Ah	12/90						
Power & Transmission	Engine	37	Model	S4S	D04EG	4TNE98-BQFLC			
		38	Manufacture	MITSUBISHI	MITSUBISHI	YANMAR			
		39	Rated output/r.p.m.	Kw 35.3/2250	36/2250	42.12300			
		40	Rated torque/r.p.m.	N.m 182/1800	177/1800	186-206/1700			
		41	No. of cylinder	4	4	4			
		42	Bore×Stroke	mm 94×120	94×120	98×110			
		43	Displacement	L 3.31	3.331	3.318			
	44	Fuel tank capacity	L 55	55	55				
	Transmission	45	Manufacture	China					
		46	Type	FSDT351					
		47	Stage	F/R 2/1					
48		Operating pressure	Mpa 16.5	20	20				

Mast Specification

Type	Model	Max. fork height mm	Overall height			Free lift						Front Overhang			Tilt range		Capacity at max.height Loand Center 500mm					
			Lowered			With backrest			Without backrest			1.8T	2.5T	3.5T	FWD	BWD	Without side shift carriage			Without side shift carriage		
			1.8T	2.5T	3.5T	1.8T	2.5T	3.5T	1.8T	2.5T	3.5T	1.8T	2.5T	3.5T	Deg	Deg	1.8T	2.5T	3.5T	1.8T	2.5T	3.5T
			mm	mm	mm	mm	mm	mm	mm	mm	mm	mm	mm	mm	mm	mm	mm	kg	kg	kg	kg	kg
wide view 2-stage mast	M330	3300	2298	2385	2480	105	160	165	105	160	165	509	585	600	10°	12°	1800	2500	3500	1800	2500	3200
	M350	3500	2398	2485	2580	105	160	165	105	160	165	509	585	600	10°	12°	1800	2500	3500	1800	2500	3200
	M370	3700	2498	2585	2680	105	160	165	105	160	165	509	585	600	10°	12°	1800	2500	3500	1800	2500	3200
	M400	4000	2698	2785	2880	105	160	165	105	160	165	509	585	600	10°	12°	1800	2500	3400	1800	2500	3100
	M450	4500	2948	3035	3130	105	160	165	105	160	165	509	585	600	10°	12°	1500	2200	3100	1400	2100	2900
	M500	5000	3198	---	---	105	---	---	105	---	---	509	---	---	6°	6°	1300	---	---	1200	---	---
	M550	5500	3498	---	---	105	---	---	105	---	---	509	---	---	6°	6°	1000	---	---	900	---	---
M600	6000	3748	---	---	105	---	---	105	---	---	509	---	---	6°	6°	800	---	---	400	---	---	
Full free 3-stage mast	TFM400	4000	2033	2080	2205	850	888	890	1230	1333	1336	509	590	620	10°	12°	1800	2500	3400	1800	2400	3100
	TFM435	4350	2158	2205	2330	980	1013	1015	1360	1458	1461	509	590	620	10°	12°	1800	2400	3000	1600	2200	2900
	TFM450	4500	2208	---	---	1030	---	---	1410	---	---	509	---	---	10°	12°	1500	---	---	1400	---	---
	TFM470	4700	---	2320	2445	---	1128	1130	---	1573	1576	---	590	620	---	---	---	2100	2800	---	1900	2500
	TFM500	5000	2408	2455	2580	1230	1263	1265	1610	1708	1710	509	590	620	6°	6°	1300	1900	2600	1200	1600	2300
	TFM550	5500	2573	2620	2745	1390	1428	1430	1770	1873	1875	509	590	620	6°	6°	1000	1500	2300	900	1200	2100
	TFM600	6000	2758	2805	2930	1580	1613	1615	1960	2058	2060	509	590	620	6°	6°	800	1200	1900	400	800	1600
TFM650	6500	2973	3020	3145	1790	1828	1830	2180	2273	2275	509	590	620	6°	6°	350	700	1300	200	400	1100	

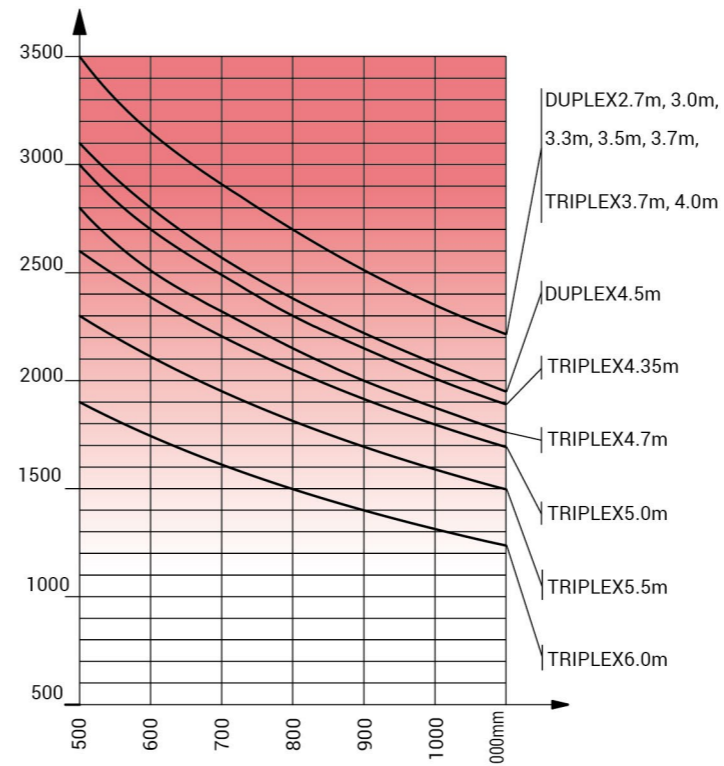


1.8T Load Chart

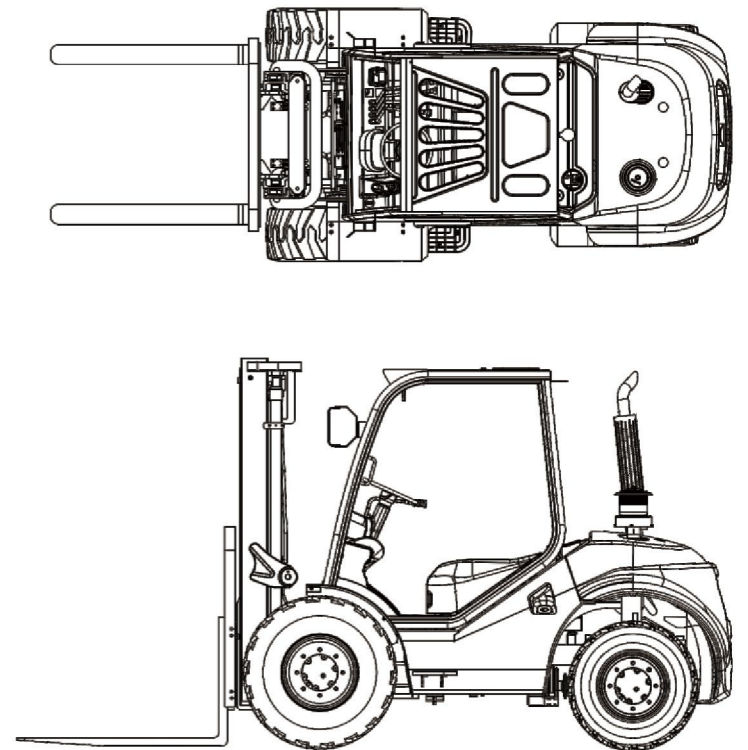


Load Curve

2.5T Load Chart

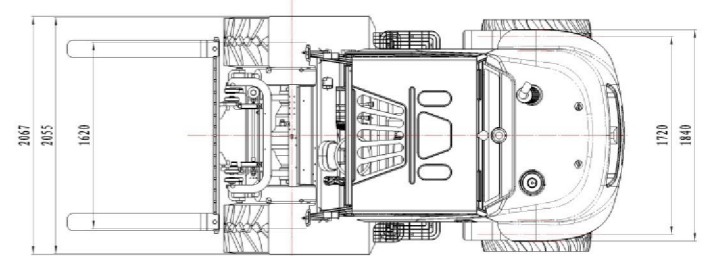
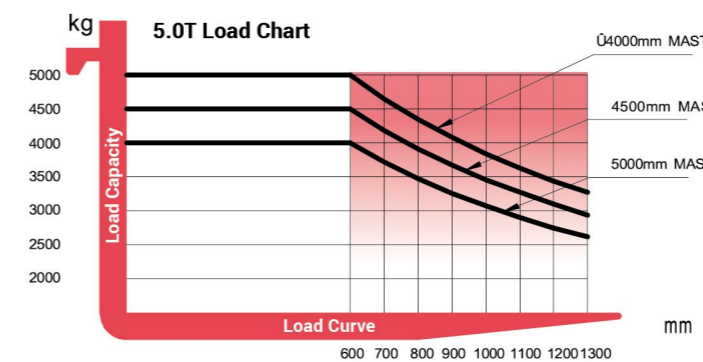
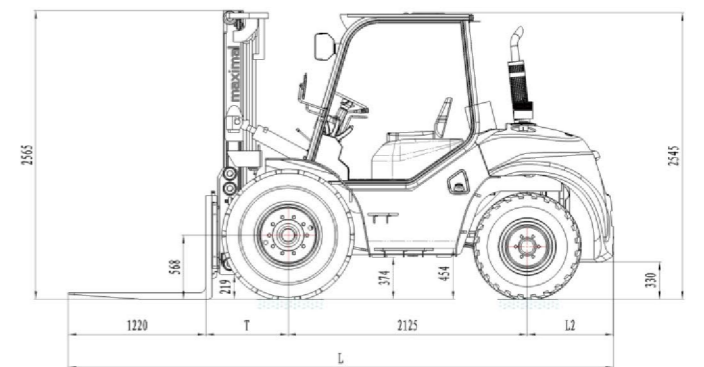


3.5T Load Chart



2WD 5T							
General	1	Model	FD50T-C2W(3)3	FD50T-C2WF3			
	2	Power type	Diesel	Diesel			
	3	Optional type	W(13B)3				
	4	Rated capacity	Kg	5000	5000		
	5	Load centre	mm	600	600		
Characteristic & Dimension	6	Lift height	mm	3000	3000		
	7	Free lift height	mm	145	145		
	8	Fork size	L×W×T	mm	1220*150*55	1220*150*55	
	9	Fork regulating range	Min./Max.	mm	300/1654	300/1654	
	10	Mast tilt angle	F/R	Deg	15°/15°	15°/15°	
	11	Front overhang		mm	732	732	
	12	Rear overhang		mm	764	764	
	13	Ground clearance	Bottom of mast	mm	320	320	
	14	Overall dimensions	Length to face of fork(without fork)	mm	3622	3622	
	15		Overall width	mm	2067	2067	
	16		Mast lowered height	mm	2565	2565	
	17		Mast extended height(with backrest)	mm	4170	4170	
	18	Overhead guard height		mm	2545	2545	
	19	Min.turning radius		mm	3550	3550	
	20	Min.right angle aisle width		mm	5700	5700	
Performance	21	Speed	Travel(Unladen)	Km/h	20/19	21/20	
	22		Lifting(Laden)	mm/s	380	420	
	23		Lowering(Laden)	mm/s	370	410	
	24	Max.Drawbar pull(Laden)		KN	50	50	
	25	Max.Gradeability(Laden)		%	20	28	
Tyre	26	Tyre	Front		445-65-22.5PR	445-65-22.5PR	
			Rear		12.5/80-18	12.5/80-18	
	27	Tread	Front	mm	1620	1620	
			Rear	mm	1720	1720	
28	Wheelbase		mm	2125	2125		
Weight	29	Self weight		kg	8450	8450	
	30	Axle distribution	Laden	Front axle	kg	11700	11700
	31			Rear axle	kg	1750	1750
	32		Unladen	Front axle	kg	3550	3550
	33			Rear axle	kg	4900	4900
Power & Transmission	34	Engine	Model		TCD 3.6L4	6BG1QC	
	35		Manufacture		DEUTZ	ISUZU	
	36		Rated output/r.p.m.	Kw	55.4/2200-2300	82/2000	
	37		Rated torque/r.p.m.	N.m	390/1300	416/1400-1600	
	38		No.of cylinder		4	6	
	39		Bore×Stroke	mm	98×120	105×125	
	40	Displacement		L	3.6	6.494	
	41	Battery	Voltage/Capacity		VIAh	2*12/80	2*12/80
	42	Operating pressure		Mpa	20	20	

Type	Model	Max. fork height	Overall height Lowered	Free lift		Front Overhang	Tilt range		Capacity	
				With backrest	Without backrest	5.0T	FWD	BWD	capacity at max. height	
				mm	mm	mm	Deg	Deg	Without side shift carriage	With side shift carriage
wide view 2-stage mast	M330	3300	2715	145	145	732	15	15	5000	4700
	M350	3500	2815	145	145	732	15	15	5000	4700
	M370	3700	2915	145	145	732	15	15	5000	4700
	M400	4000	3115	145	145	732	15	15	5000	4700
	M450	4500	3365	145	145	732	15	15	4500	4050
Full free 3-stage mast	TFM400	4000	2560	1000	1350	765	15	15	5000	4500
	TFM435	4350	2685	1125	1475	765	15	15	4500	4050
	TFM450	4500	2736	1176	1526	765	15	15	4000	3600
	TFM470	4700	2802	1242	1592	765	15	15	3700	3350
	TFM500	5000	2935	1375	1725	765	10	15	3300	2950
	TFM600	6000	3300	1740	2090	765	10	15	2000	1800



Forklift Specification

